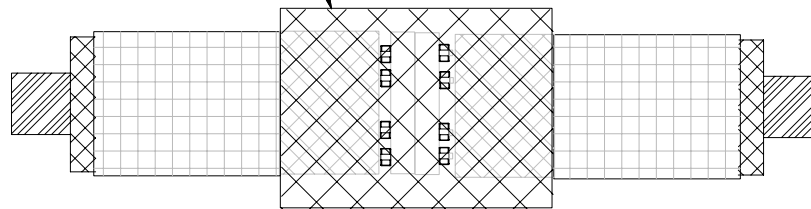
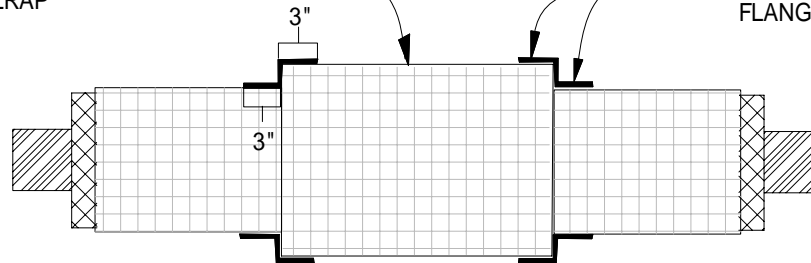


2nd LAYER OF INSULATION APPLIED OVER FLANGE AND EXPOSED INSULATION

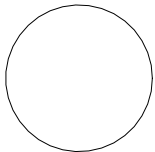


WRAP 2ND LAYER OF INSULATION WITH INSULRAP

APPLY A STRIP OF INSULRAP TO INSULRAP ON PIPE AND THEN ONTO INSULRAP OVER INSULATION ON FLANGE A MINIMUM OF 3" BOTH DIRECTIONS



INSULRAP STRIP WIDTH WILL VARY WITH INSULATION THICKNESS - A MINIMUM 3" LAP IS NECESSARY ONTO FIRST LAYER OF INSULRAP IS NECESSARY ON BOTH PLANES OF INSULATION



SECTION @ I50 OVER FLANGE

POLYGUARD PRODUCTS, INC. 2012

(NOT TO SCALE)