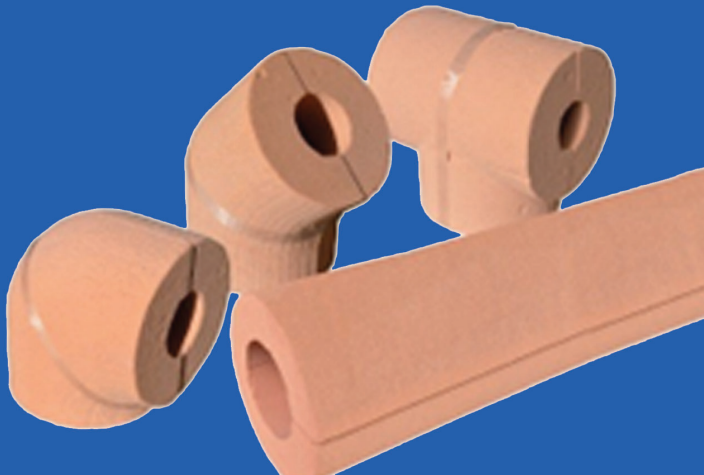


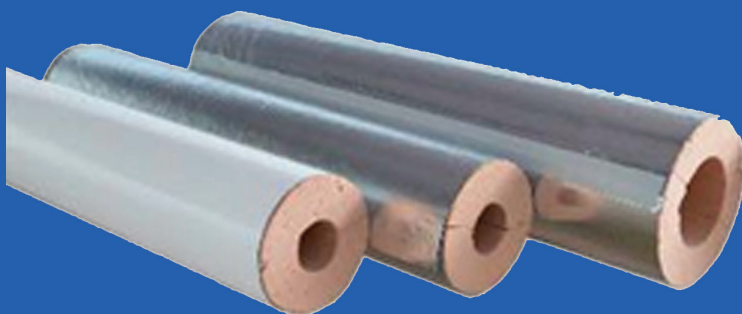
Polyguard PolyPhen[®]

Product Overview



The Polyguard PolyPhen[®] phenolic insulation is one component in our PolyPhen[®] system including a range of rigid foam insulation densities designed for piping systems, tanks, vessels and ductwork in commercial and industrial applications.

The PolyPhen[®] phenolic rigid foam insulation products, have thermal conductivities ranging from 0.17 - .24 Btu in/hr ft² and can be used to insulate surfaces operating within the temperature range of -290°F to +250°F (-180°C to +120°C), and is manufactured to provide optimum thermal performance and flame resistance, low smoke emissions, environmental safety, and efficient cost.



2.5 Lb. Density, Orange
3.75 Lb. Density, Yellow/White
5.0 Lb. Density, Pink/ Red
7.5 Lb. Density, Green



8.3 Ft. Long, 3 Ft. Wide, 2.5 Ft. High, 750 Brd. Ft. in Billet.



Quality closed cell, efficient insulation



Accurately fabricated, tight fitting insulation



Firmly butted and sealed offset joints



Vapor stops as needed



Continuous, sealed ZeroPerm vapor barrier



Mechanical and weather cladding

Meets the requirements of ASTM C 1126 type III products

Properties	Standard	Units	Value & Type			
			2.5 LB	3.75 LB	5 LB	7.5 LB
COLOR			Orange	Yellow/White	Pink/Red	Green
NOMINAL DENSITY	ASTM D-1622	lb/ft ²	2.5	3.75	5	7.5
CLOSED CELL CONTENT	ASTM D-2856	Minimum %	95	95	95	95
TEMPERATURE LIMITS		°F	-290 to +250	-290 to +250	-290 to +250	-290 to +250
THERMAL CONDUCTIVITY	ASTM C-518	Btu-in./hr-ft ² -°F@75°F	0.17	0.19	0.22	0.24
SPECIFIC HEAT		Btu/lb.°F	0.45	0.45	0.45	0.45
COMPRESSIVE STRENGTH Parallel to Rise	ASTM D-1621	lb/in ²	30	50	90	150
	ASTM D-1621	lb/in ²	25	40	70	110
TENSILE STRENGTH Parallel to Rise	ASTM D-1623	lb/in ²	23	45	80	100
	ASTM D-1623	lb/in ²	21	35	60	90
THERMAL AND HUMID AGING -40 " 6°F Ambient RH 158 " 4°F 97, " 3% RH 257 " 4°F Ambient RH	ASTM D-2126	% lin chg	#2	#2	#2	#2
	ASTM D-2127	% lin chg	#2	#2	#2	#2
	ASTM D-2128	% lin chg	#2	#2	#2	#2
WATER VAPOR PERMEABILITY	ASTM E-96	perm inch	#4	#4	#4	#4
WATER ABSORPTION	ASTM C-209	% by volume	0.6%	0.6%	0.6%	0.6%
FLAME/SMOKE	ASTM E-84					
Insulation only (2.5# tested 2-26-2016)	up to 4 inches	flame spread	25/50	#25	#25	#25
	up to 4 inches	smoked developed	0.0	#50	#50	#50

Part #	Bun Density (LB.)	Bun Color	Bun Length (FT.)	Bun Width (FT.)	Bun Height (FT.)	BRD. FT. in Bun
POLYPHEN 2500	2.5	Orange	8.3	3	2.5	750
POLYPHEN 3750	3.75	Yellow/White	8.3	3	2.5	750
POLYPHEN 5000	5.0	Pink/Red	8.3	3	2.5	750
POLYPHEN 7500	7.5	Green	8.3	3	2.3	700

contact us



3801 S. IH-45
Ennis, TX 75119

Phone : 214-515-5000

Web : www.polyguard.com

Social : @polyguardproducts

